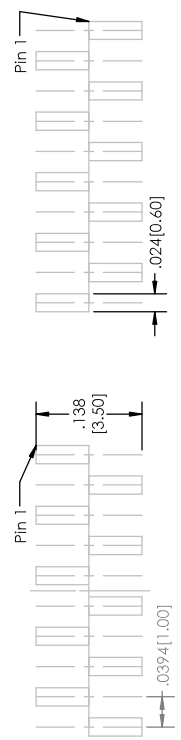
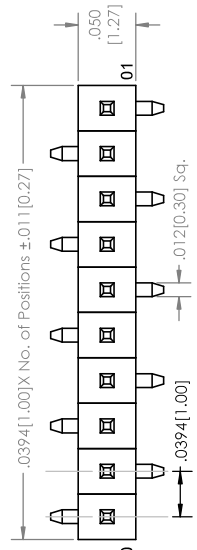
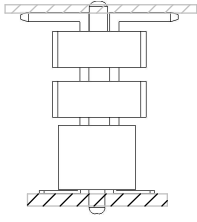


Recommended P.C. Board Layout
SCALE 8:1

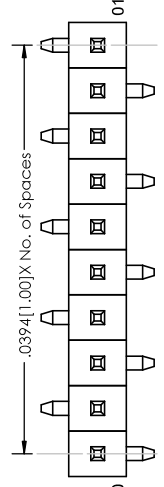


Single (S) Double (D)

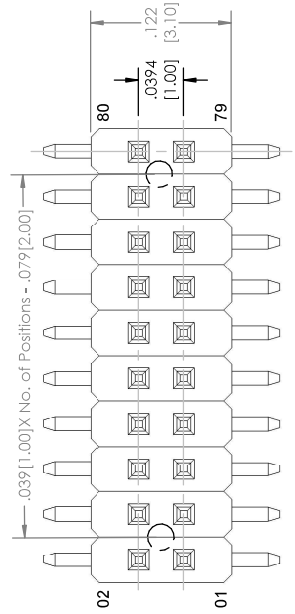
APPLICATION



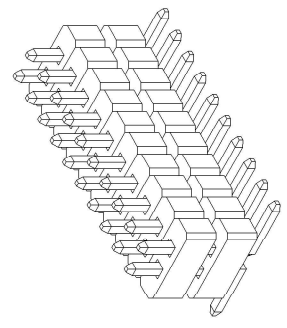
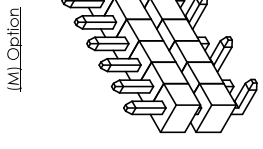
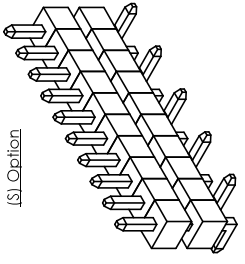
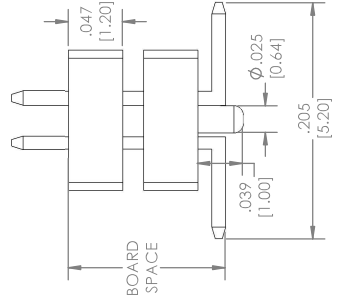
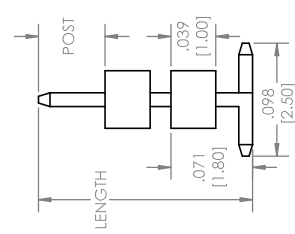
SINGLE (S) ROW



SINGLE (M) ROW



DOUBLE ROW



BSTCM-7 **(A)** - **(B)** **(C)** **(D)** **(E)** **(F)** **(G)** **(H)** **(I)** **(J)** **(K)** **(L)** **(LF)**

- A. Pins Per Row
 - 1 through 40
- B. Row Specification
 - S= Single Row
 - D= Double Row
- C. Desired Post Height
 - Please Specify
 - e.g., .100(.254) = 100
- D. Pin Post is not specified: Overall Length(L) - Board Space(B) = Post(P)
- E. Plating Options below
- F. Desired Board Space
 - Please Specify required space
 - E.g., .100(.254) = 100
- G. Polarized Position
 - Leave blank if not needed
 - If required, specify empty pin position
 - e.g., .012 for Pin 12 (Single Row)
- H. Footprint (Pin 1)
 - S= Pin 1 Left
 - M= Pin 1 Right
- I. Packing Information
 - TR= Tape and Reel
 - TB= Tube
- J. Pad
 - P= Plastic
 - O= No Pad
- K. Alignment Pin
 - Leave blank if not needed
 - AP= With
 - L= Lead Free

Plating Options	
F	Gold Flash Over Entire Pin
T	200u Matte Tin All Over

Pin Options	
Length	
.136	3.45mm [04]
.186	4.72mm [06]
.236	5.99mm [08]
.286	7.26mm [10]
.310	7.87mm [11]
.336	8.53mm [12]
.386	9.80mm [14]

Post + Board Space must not exceed Overall Length

Specifications:
 Current Rating: 1.0 Ampere
 Insulation Resistance: 500M Ohms Min.
 Dielectric Withstanding: 600V AC
 Contact Resistance: 20M Ohms Max.
 Operation Temperature: -40°C to +105°C
 Max. Process Temperature
 Peak: 260°C up to 10 secs.
 Process: 230°C up to 60 secs.
 Wave: 260°C up to 6 secs.
 Reflow: 260°C up to 10 secs.
 Manual Solder: 350°C up to 5 secs.

Materials:
 Contact Material: Phosphor Bronze
 Insulator Material: Nylon 6T

Tails may be clipped to achieve specific dimensions.
 Products cut to specific sizes are uncancelable/nonreturnable.
 Parts are subject to change without notice.

UNLESS OTHERWISE SPECIFIED: DIMENSIONS ARE IN INCHES TOLERANCES: ONE DECIMAL $\pm .100$ TWO DECIMAL $\pm .010$ THREE DECIMAL $\pm .005$ FOUR DECIMAL $\pm .002$		NAME DATE
DRAWN CHECKED ENG. APPR. MFG. APPR.	ECW GWE 05/26/16 05/26/16	
INSURANCE CONTINGENT TOLERANCING P/R: MATERIAL: P/R#:	ADDRESS: 2533 Continental Blvd. Jeffersonville, IN 47130 Phone: 812-670-4174 Fax: 812-670-4175 E-Mail: mfe@mlkelectronics.com	
REV C	TITLE: BSTCM-7 SERIES	SCALE 12:1
SIZE C	DWG. NO.	SHEET 1 OF 1



PROPERTY AND CONFIDENTIAL INFORMATION CONTAINED HEREIN IS THE PROPERTY OF MAJOR LEAGUE ELECTRONICS. ANY REPRODUCTION OR TRANSMISSION OF THIS INFORMATION WITHOUT THE WRITTEN PERMISSION OF MAJOR LEAGUE ELECTRONICS IS PROHIBITED.